

# IMSAI ECO 77-0039

---

## *Affected products: CP-A Rev-4*

### **Summary**

CP-A Modifications for Dynamic RAM.

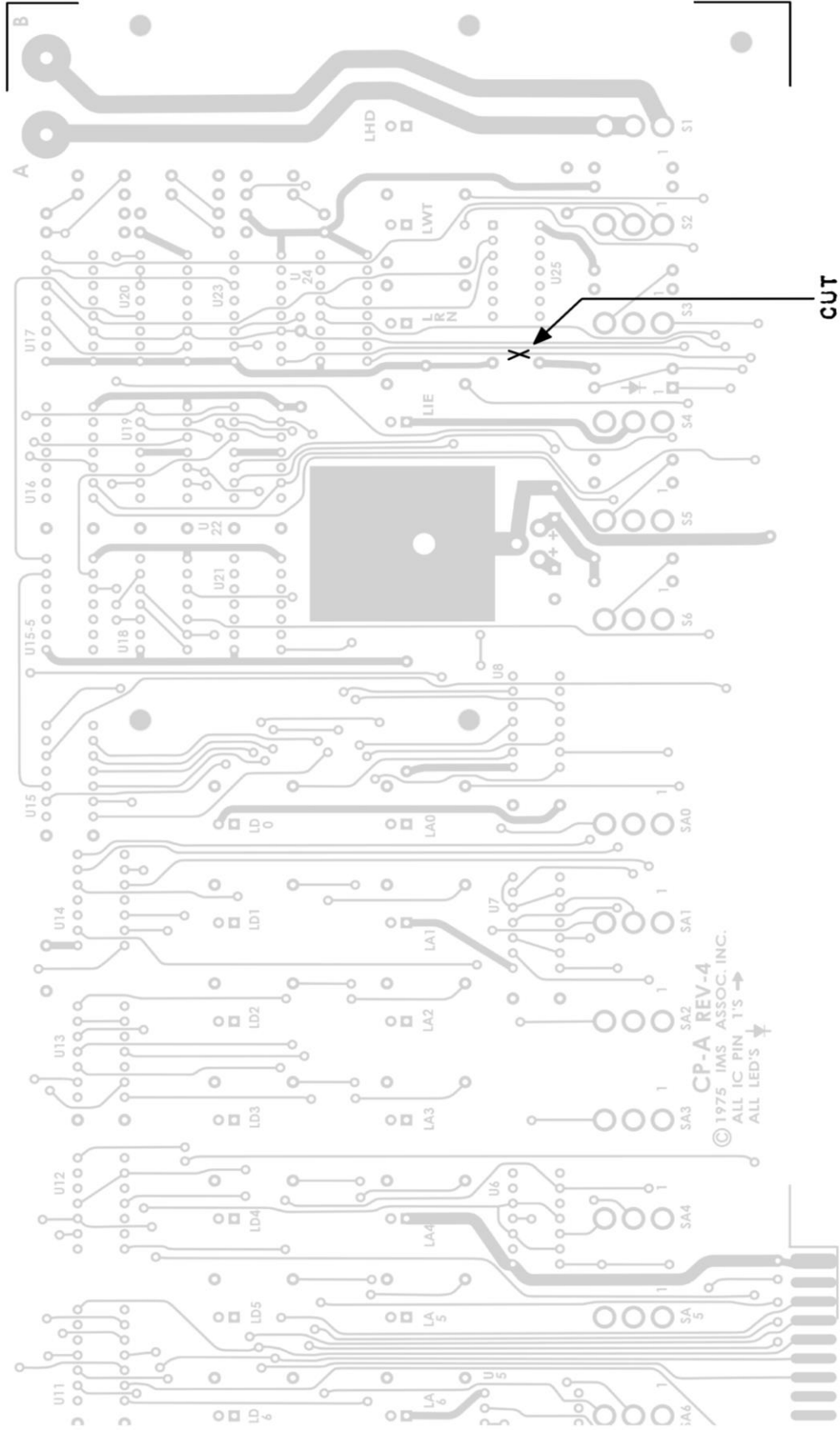
The following modification must be made to the CP-A Rev-4 or earlier if it is to be used with the RAM-16, RAM-32, RAM-65, or RAM-III memory boards. This change makes the signal on the backplane line 71 (RUN) agree with the bus definition. This change does not affect the CPA's compatibility with other IMSAI products.

### **Details**

1. Refer to FIGURE 1 and make the following cut on the component side of the board.
  - a. Cut the trace extending down from U24 pin 9.
2. Refer to FIGURE 2 and make the following cuts on the solder side of the board.
  - a. Cut the trace between U24 pin 10 and via A.
  - b. Cut the trace from via B near the spare IC location.
  - c. Remove the entire via pad connected to edge connector pin 71. Do not remove any more of the edge connector finger that is necessary to fully isolate it from the via. You will need to solder a wire onto the edge of the finger later.
3. Refer to FIGURE 2 and install the following jumpers on the solder side of the board.
  - a. From U22 pin 5 to U24 pin 10.
  - b. From edge connector pin 71 to U24 pin 9.
  - c. From via A to via B.

### **Notes**

IMSAI MFG. CORP. released this ECO on April 22,1977



COMPONENT SIDE

**FIGURE 1**  
**MODIFICATION TO CPA REV. 4 & EARLIER**  
**FOR DYNAMIC RAM OPERATION**  
 ECN - 77 - 0039

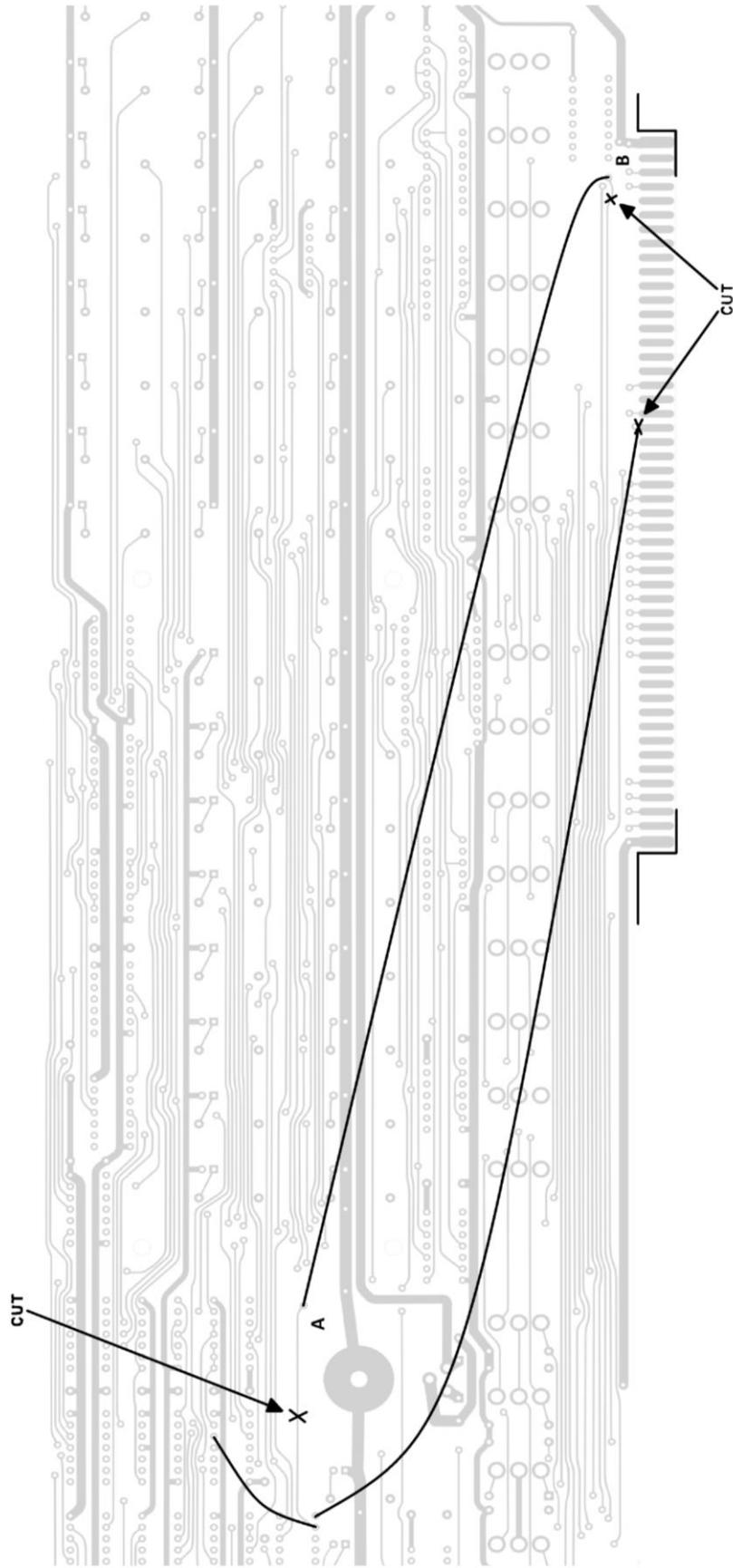


FIGURE 2  
MODIFICATION TO CPA REV. 4 & EARLIER  
FOR DYNAMIC RAM OPERATION  
ECN - 77 - 0039

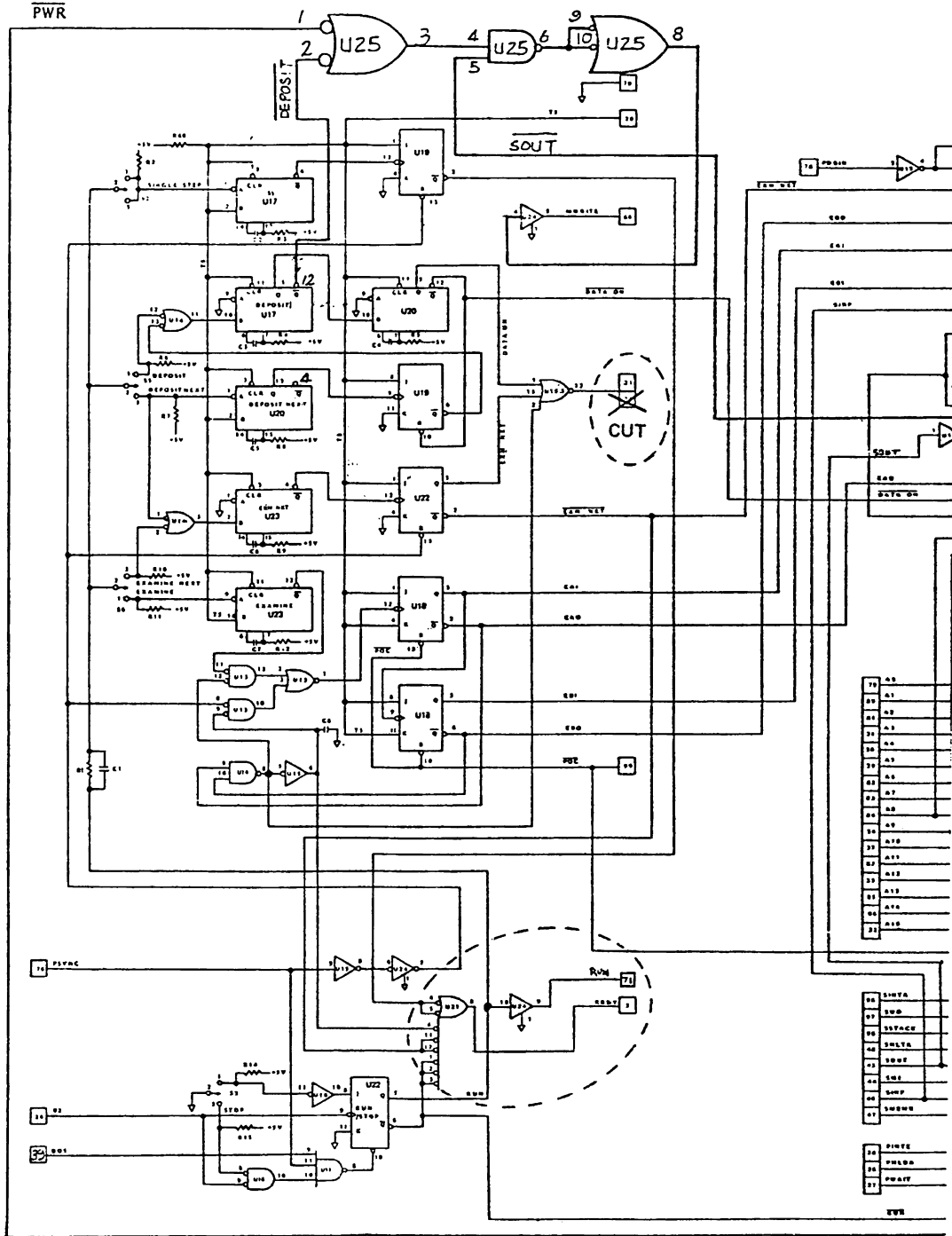


FIGURE 3  
 MODIFICATION TO CPA REV. 4 & EARLIER  
 ECN 77-0039

---

# Document Revision History

Revision	Date	Initial	Description
0	10/15/2024	NBB	Initial document creation.